

ECONOMIC IMPACT: THE UNIVERSITY OF ARIZONA COLLEGE OF MEDICINE – PHOENIX/HEALTH SCIENCES

ADDRESSING ARIZONA'S
PHYSICIAN SHORTAGE

1ST

ALLOPATHIC MEDICAL SCHOOL
IN PHOENIX

1,100+

COMMUNITY FACULTY MEMBERS

PHOENIX BIOMEDICAL CAMPUS

CONSISTING OF:



PHOENIX BIOMEDICAL CAMPUS ECONOMIC IMPACT IN 2013 ALONE

\$1.26 BILLION

PHOENIX BIOMEDICAL CAMPUS ESTIMATED ECONOMIC IMPACT IN 2025

\$3.1 BILLION

UA - PHOENIX

IN 2013 ALONE

UA COLLEGES ON CAMPUS



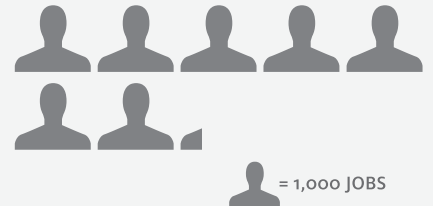
ECONOMIC IMPACT

\$961 MILLION



EMPLOYMENT GROWTH

7,185



TAXES GENERATED

\$44 MILLION

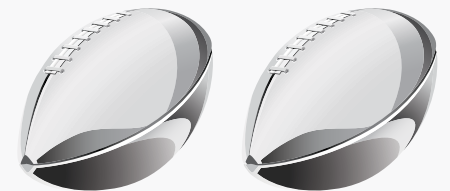


FINANCIAL EQUIVALENT

ECONOMIC IMPACT FOR FY2013

2 SUPER BOWLS

\$961 = MILLION



XLIX XLIX

EACH SUPER BOWL = \$500,000,000
ECONOMIC BOOST

Source of Economic Impact Figures:
TRIPP UMBACH. 2014. The Economic and Social
Contributions: University of Arizona – Phoenix
and the Phoenix Biomedical Campus

